

GPN601

Overview

GPN601 is a universal access device for private service applied to high band, low price and high reliability. GPN601 supports 802.3ah liner OAM and adapt to 100M Ethernet service access.



Technical specifications

System features	
Interfaces	1*FE 1*FX
Network management	SNMP/Telnet/Console
OAM	© IEEE 802.3ah OAM Provide link performance monitoring and loopback testing.
Dimension(mm)(W*D*H)	118*156*38
Power support	AC 220V and DC -48V
Working temperature	0°C~50°C
Power consumption	<4W

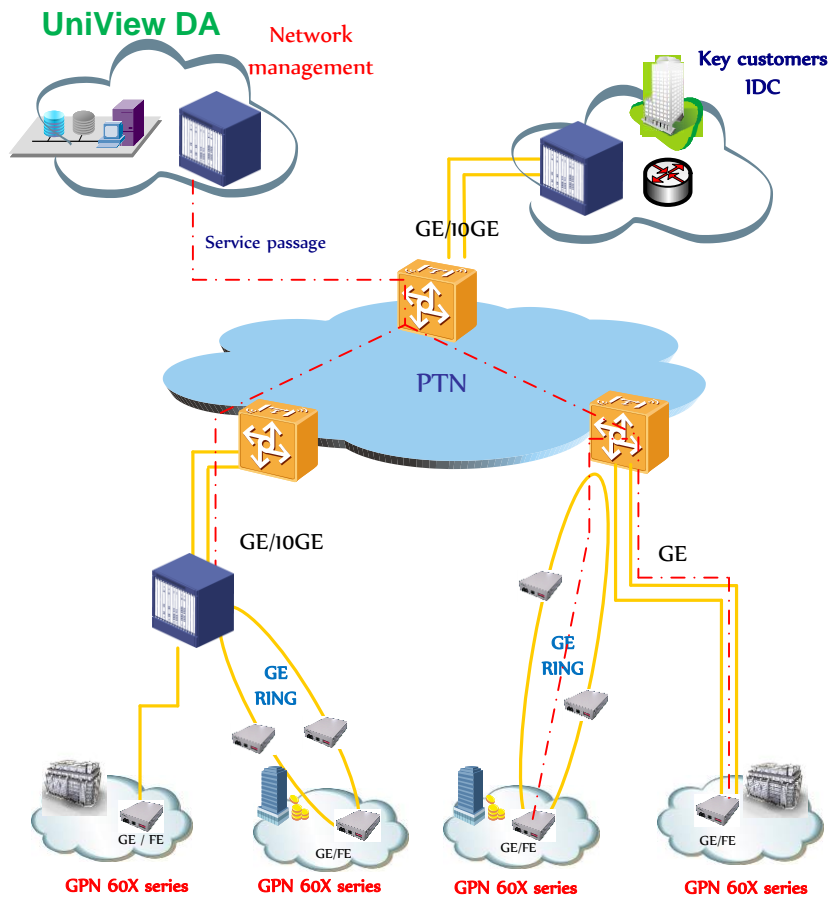
Ordering information

Part number	Description
	GPN605P
Uplink optical port number	1
Fiber type of uplink optical port	Single fiber/dual fiber
Transmission distance	20/40/80/100km
Type of uplink optical interface	1*9(SC/FC), SFP



Access interfaces	1*FE
Dimension(mm)(W*D*H)	118*156*38
Central office type supported	GFT2000 series/MSAP-E3300 series/MSAP-E6000 series/GPN7000 series

Application



GPN601 works with the packet network and data network. It can manage terminal device by network management VLAN.